

QOVANS® QHSE POLICY

A step towards a more sustainable future



ABOUT US . . .

Qovans® has been designing, creating, and manufacturing demontable partitions and partitioning solutions for industrial and ERP spaces since 1964.

OUR RESPONSIBILITIES

Fully aware of the impact of our activities on social and environmental aspects, we have been committed for many years to a sustainable approach at all stages of our expertise and development.

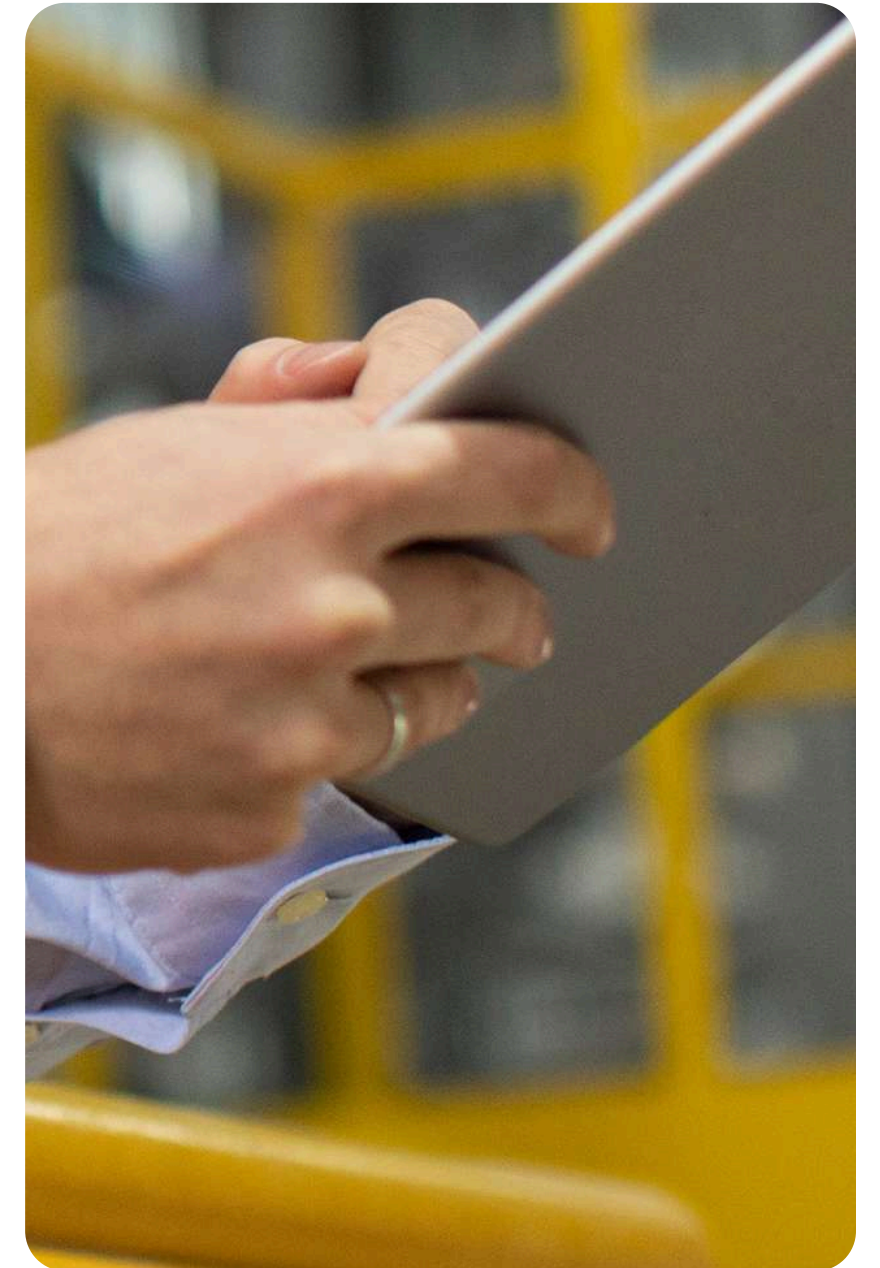
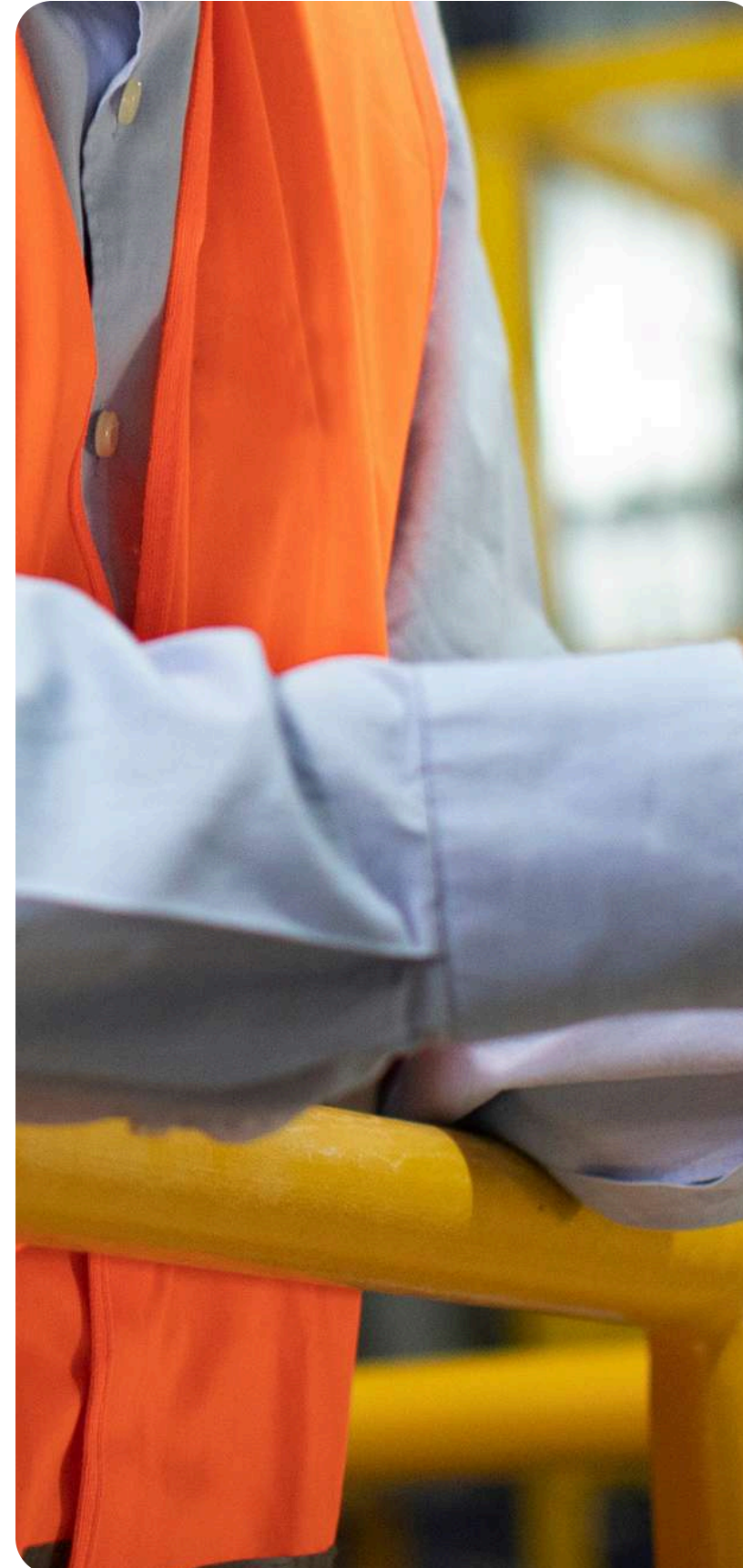
This approach is based on various pillars :

- QUALITY,
- HEALTH & SAFETY,
- SOCIAL,
- ENVIRONMENT AND ENERGY.

QUALITY

Qovans® commitments are characterized by the continuous pursuit of customer satisfaction with the objectives of:

- Listening to our customers and taking necessary actions
- Involving our staff in our quality control process
- Ensuring the reliability of internal and external claims
- Ensuring the reliability of the reject rate of all raw materials
- Implementing a continuous improvement program.





HEALTH & SAFETY AT WORK

Our commitments are characterized by the development of a safety culture through consultation and participation of workers with the objectives of :

- Ensuring compliance with current regulations
- Identifying hazards and assessing risk levels in terms of occupational health and safety (OHS) and applying necessary measures to eliminate or control them to the lowest possible level
- Ensuring that the organization of work, methods, and techniques used to perform this work are safe
- Providing and maintaining a healthy, clean, and orderly work environment that preserves the OHS of employees
- Training and raising awareness among our staff, new hires, and external participants about the company's safety risks. In our production workshops, wearing personal protective equipment is mandatory, and a sensitization campaign is conducted for new hires during their onboarding.

SOCIAL

Our headquarters and industrial site are located in Normandy, in Falaise, making our company one of the major private employers in the city.

Our commitments in terms of local and societal development are characterized by :

- Keeping all our production in France by outsourcing certain tasks to regional industrial partners
- Promoting youth training through apprenticeship contracts, thus facilitating their integration into the professional world
- Using local establishments and services for assistance through work (ESAT) for certain services, entrusting the assembly and part of the manufacturing of our marketing tools to accredited providers employing individuals in reintegration or with physical and/or motor disabilities

These initiatives illustrate our commitment to sustainable development, integrating social, environmental, and economic concerns into our activities.

Corporate Social Responsibility (CSR) applies to all companies, from listed multinationals to small and medium enterprises.



ENVIRONMENT AND ENERGY



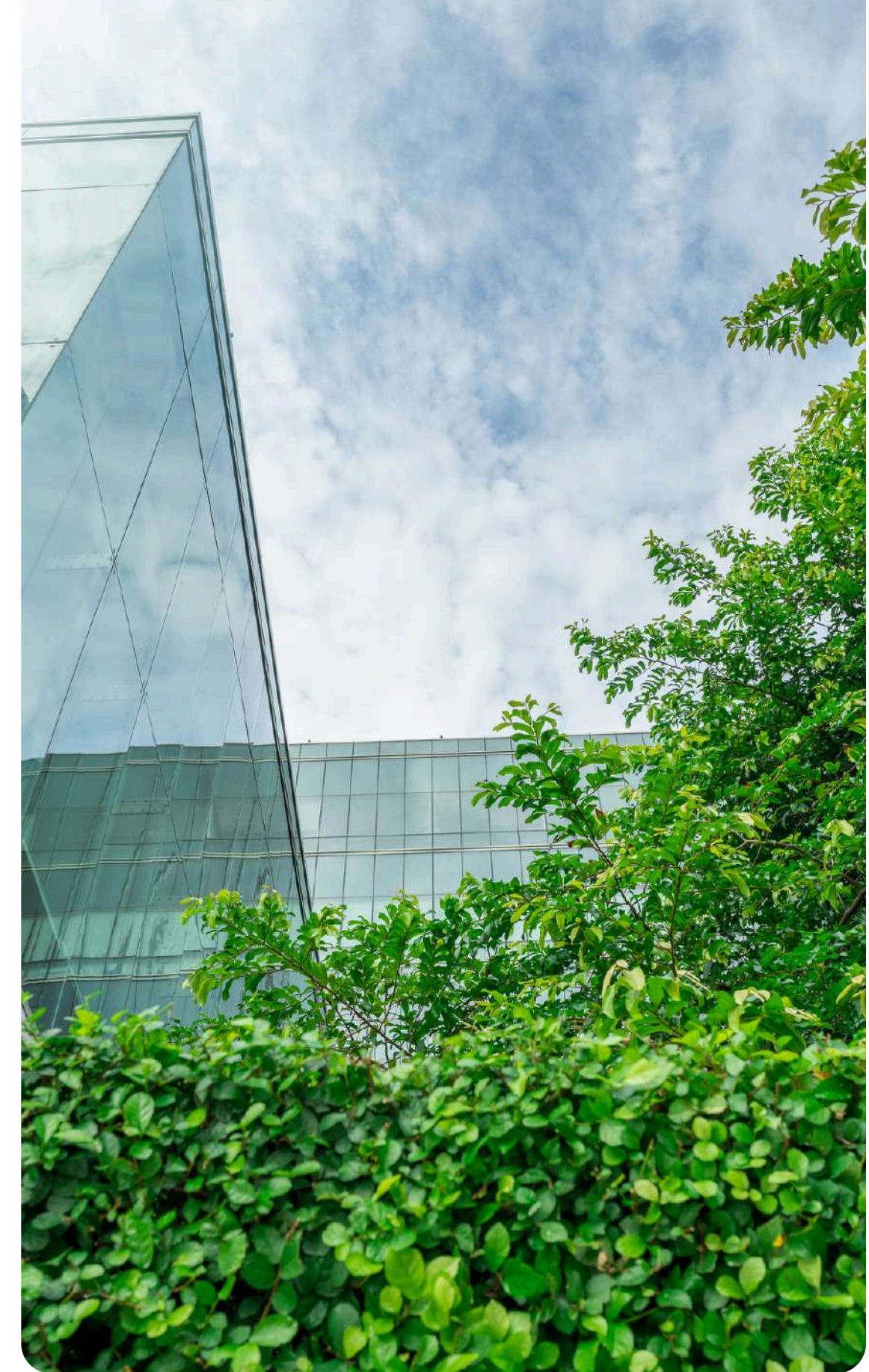
Qovans® is committed to an environmental approach.



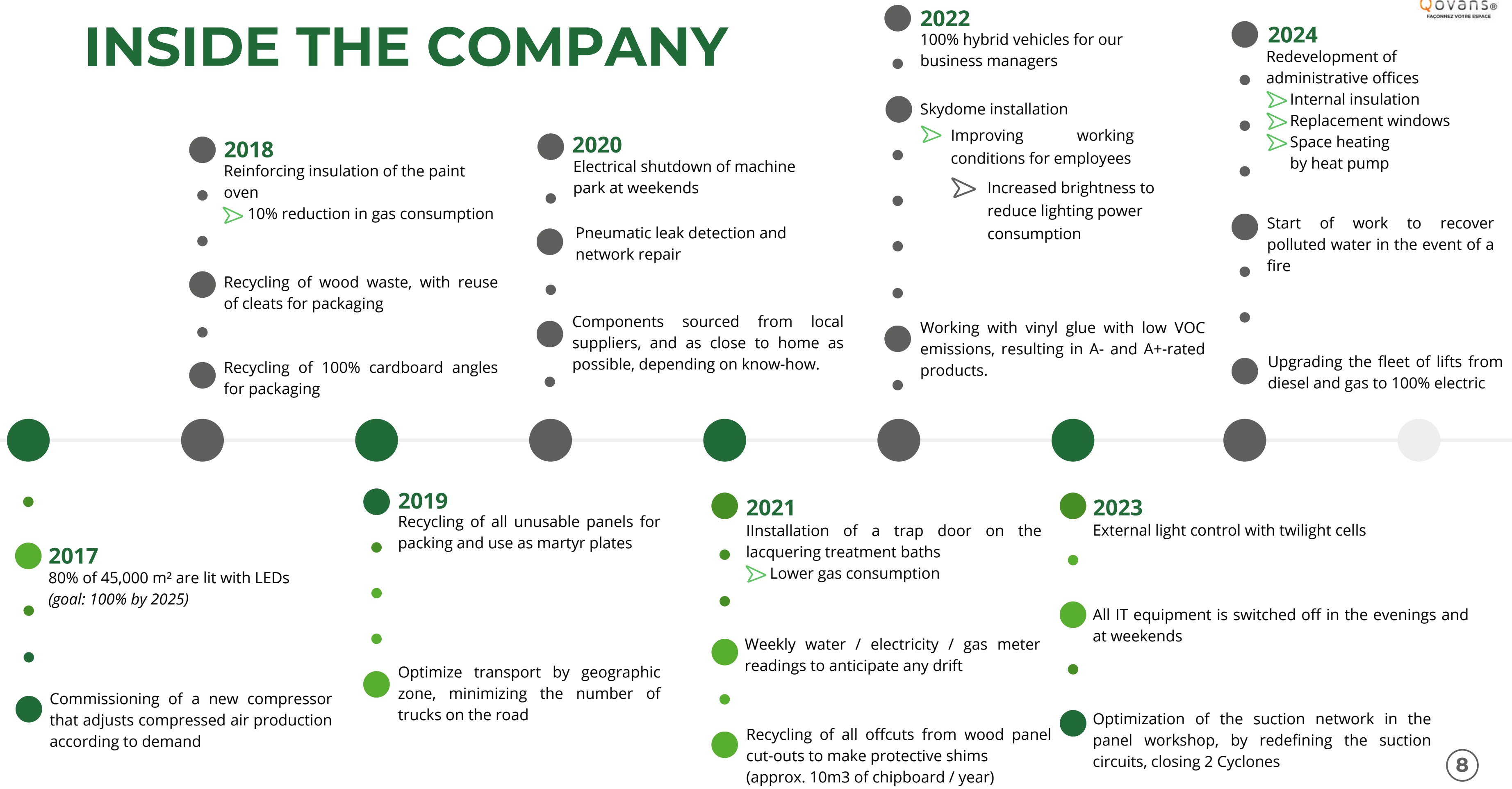
INSIDE THE COMPANY

Our environmental commitments are characterized by integrating eco-design into our products with the objectives of :

- Providing resources to reduce energy consumption
- Promoting the purchase of energy-efficient products and services that influence energy performance and promoting design activities that consider energy performance improvement
- Monitoring our emissions and waste production daily to reduce our environmental footprint
- Raising daily awareness among our employees about sustainable development: electronic communications, sorting and recycling paper, turning off lights and computers at the end of the day
- Optimizing our waste treatment channels to ensure 100% recycling
- Reducing our carbon footprint



INSIDE THE COMPANY



2018
 Reinforcing insulation of the paint oven
 > 10% reduction in gas consumption
 Recycling of wood waste, with reuse of cleats for packaging
 Recycling of 100% cardboard angles for packaging

2020
 Electrical shutdown of machine park at weekends
 Pneumatic leak detection and network repair
 Components sourced from local suppliers, and as close to home as possible, depending on know-how.

2022
 100% hybrid vehicles for our business managers
 Skydome installation
 > Improving working conditions for employees
 > Increased brightness to reduce lighting power consumption
 Working with vinyl glue with low VOC emissions, resulting in A- and A+-rated products.

2024
 Redevelopment of administrative offices
 > Internal insulation
 > Replacement windows
 > Space heating by heat pump
 Start of work to recover polluted water in the event of a fire
 Upgrading the fleet of lifts from diesel and gas to 100% electric

2017
 80% of 45,000 m² are lit with LEDs (goal: 100% by 2025)
 Commissioning of a new compressor that adjusts compressed air production according to demand

2019
 Recycling of all unusable panels for packing and use as martyr plates
 Optimize transport by geographic zone, minimizing the number of trucks on the road

2021
 Installation of a trap door on the lacquering treatment baths
 > Lower gas consumption
 Weekly water / electricity / gas meter readings to anticipate any drift
 Recycling of all offcuts from wood panel cut-outs to make protective shims (approx. 10m³ of chipboard / year)

2023
 External light control with twilight cells
 All IT equipment is switched off in the evenings and at weekends
 Optimization of the suction network in the panel workshop, by redefining the suction circuits, closing 2 Cyclones

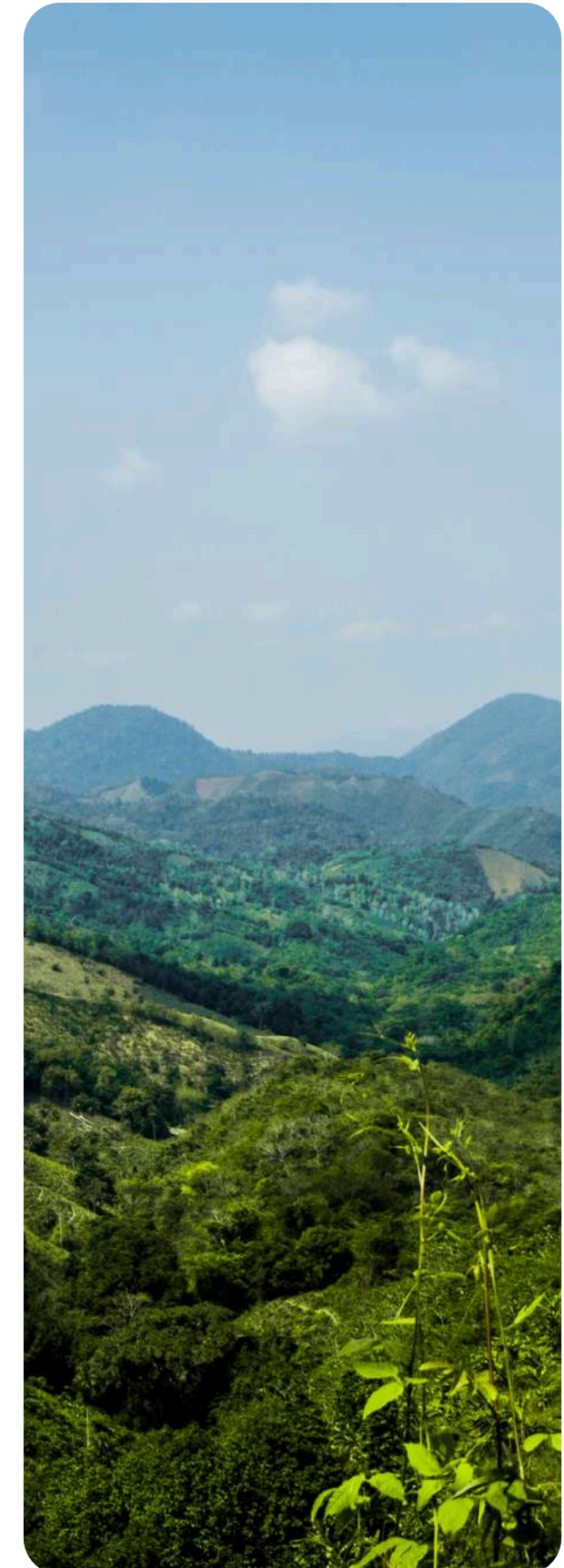
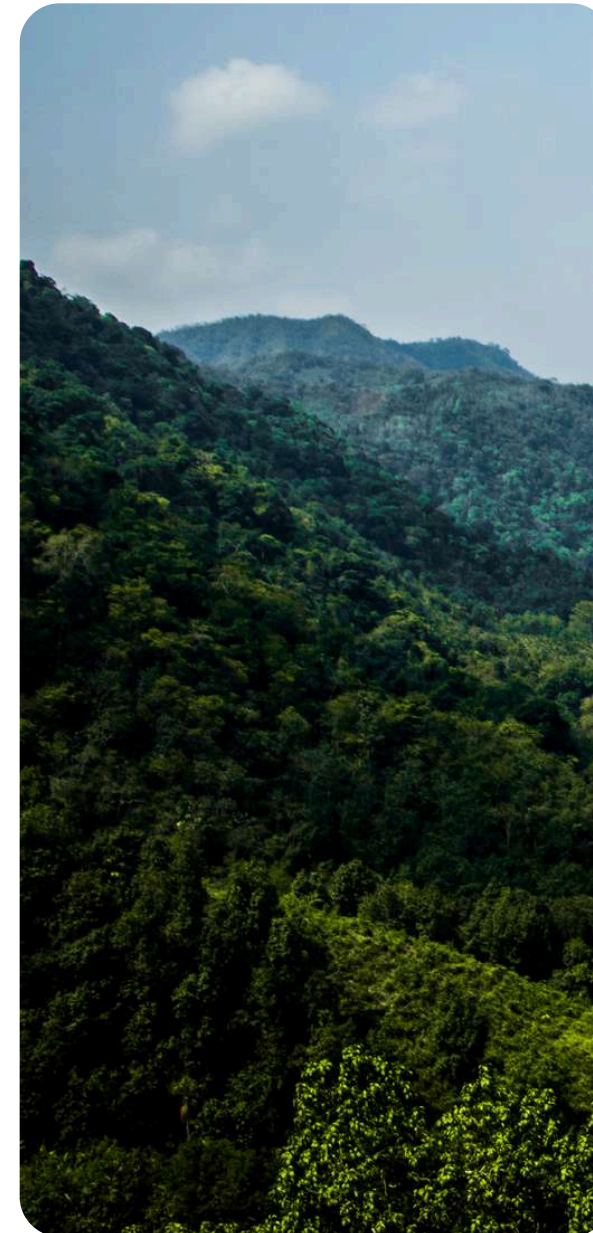
Our response to the challenges of offices buildings

Mindful of future challenges and our impact on the environment, since 2019 we have been engaged in a voluntary process to identify and highlight our best practices and weaknesses. This initiative also aims to reinforce our commitment to obtaining ISO 9001 and ISO 14001 certification.

Our company is resolutely committed to responsible environmental practices at all stages of its expertise and development.

This approach includes several aspects:

- Selection and sourcing of raw materials
- Design and industrial investment
- Training and development of our employees
- Installation ergonomics and eco-packaging study
- Choice of partnerships and suppliers...



ECO-CONSTRUCTION



From the design of our products to their delivery for implementation, our daily life is driven by the continuous improvement of our technical solutions to meet the eco-construction criteria required by the reference labels in the tertiary market: HQE, BREEAM, and LEED.

It is important to note that it is the building that is certified and not the products. The level of certification is set by the project owner and the performances are evaluated by an independent organization. Qovans products contribute positively to the acquisition of certifications but will not be individually certified.





HQE

➤ **What is it?**

The HQE (High Environmental Quality) certification, initiated by the HQE Association, recognizes the environmental, life, and economic quality of buildings, neighborhoods, or infrastructures. It is based on a voluntary approach covering all phases of a project (design, construction, operation, deconstruction) and incorporates a comprehensive approach with 14 environmental targets in four areas: eco-construction, eco-management, comfort, and health.

➤ **Why obtain HQE certification?**

Obtaining HQE certification recognizes the quality and durability of buildings, improves the well-being of occupants by optimizing comfort and air quality, reduces ecological impact through energy, water, and waste management, and controls costs and deadlines while enhancing the buildings' market value. It distinguishes projects, attracting clients and investors.

➤ **How to obtain HQE certification?**

To obtain HQE certification, one must use the reference frameworks of the HQE-GBC Alliance, analyze different scenarios for each project, involve all stakeholders, undergo third-party audits for transparency, and implement a rigorous management system.

HQE

➤ *The impact of Qovans® partitions on obtaining HQE certification*

Qovans® partitions contribute to HQE certification by meeting 6 of the 14 environmental targets thanks to :

- Reducing pollutant emissions : Lacquered aluminium frames classified A+ for VOC emissions, improving indoor air quality.
- Quality of materials and environmental impact: FDES, guaranteeing transparency on the environmental impact of products.
- Certifications and quality labels: CERFF certified by the CSTB, attesting to their durability and quality.
- Waste management: Modularity reduces site waste.
- Occupant comfort: Improved acoustic comfort in interior spaces.
- Cost control: flexible partitions for efficient management of costs and deadlines.

These advantages mean that Qovans® partitions can effectively support the HQE approach, promoting sustainable and comfortable buildings.

BREEAM

➤ **What is it?**

Developed in 1990 by the Building Research Establishment in the UK, BREEAM (Building Research Establishment Environmental Assessment Method) is a certification framework aimed at assessing the environmental performance of buildings. Applied to various types of real estate projects, this certification evaluates their impact on the environment in 10 categories.

➤ **Why obtain BREEAM certification?**

Having become an international standard, BREEAM certification enhances CSR and sustainable development commitments. It reduces operating costs by optimizing energy consumption, improves the comfort and well-being of occupants, and is a differentiating factor for real estate assets by highlighting energy performance actions.

➤ **How to obtain BREEAM certification?**

Points called credits are awarded after an audit based on the performances achieved to obtain a final score. Building performances are ranked and certified at the levels: Unclassified, Pass, Good, Very Good, Excellent, Outstanding.

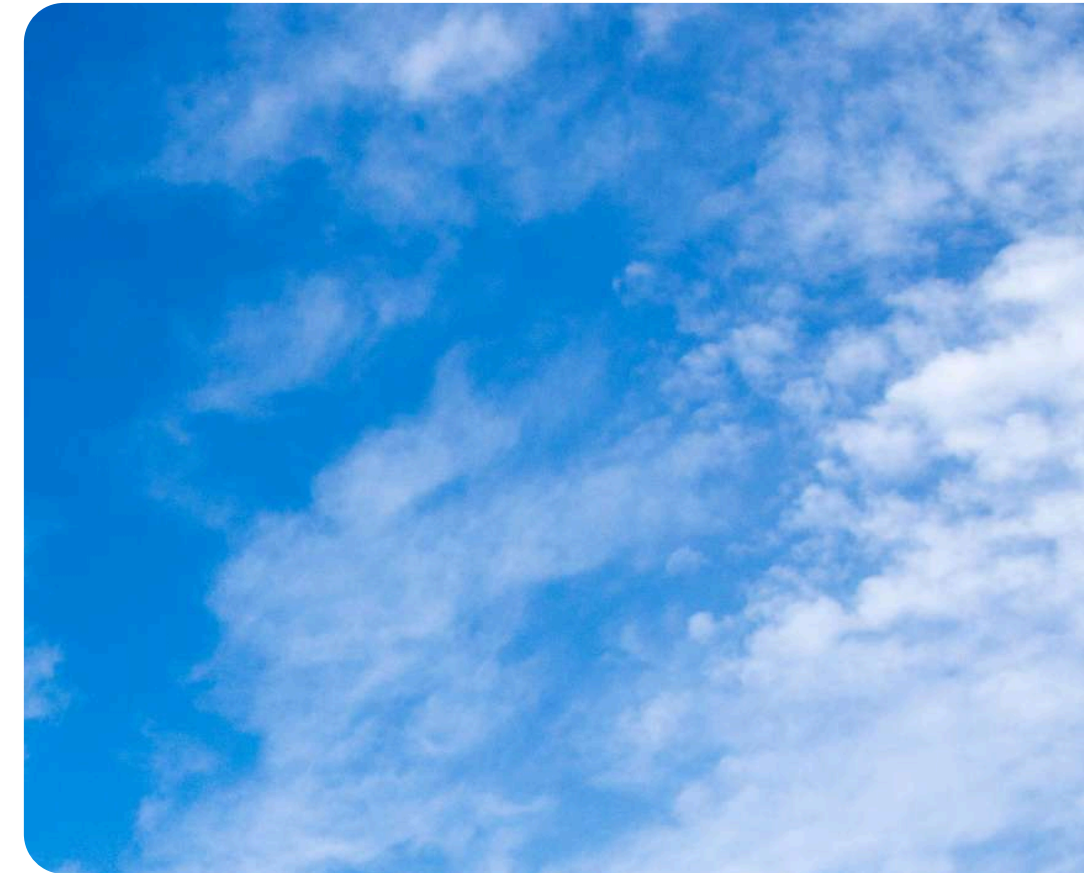


BREEAM

➤ *Qovans and BREEAM certification*

Qovans contributes positively to BREEAM certification projects by providing innovative products and solutions that improve the environmental performance of your buildings. We help you earn credits on these criteria :

- Durable materials: Our products meet environmental criteria and contribute to reducing the carbon footprint of projects.
- Energy efficiency: Qovans solutions are designed to optimize building energy efficiency.
- Occupant comfort: Our solutions improve user well-being, an essential criterion for BREEAM certification.
- Support throughout the project: Qovans supports its clients at every stage of the certification process, from design to implementation, through the final audit.



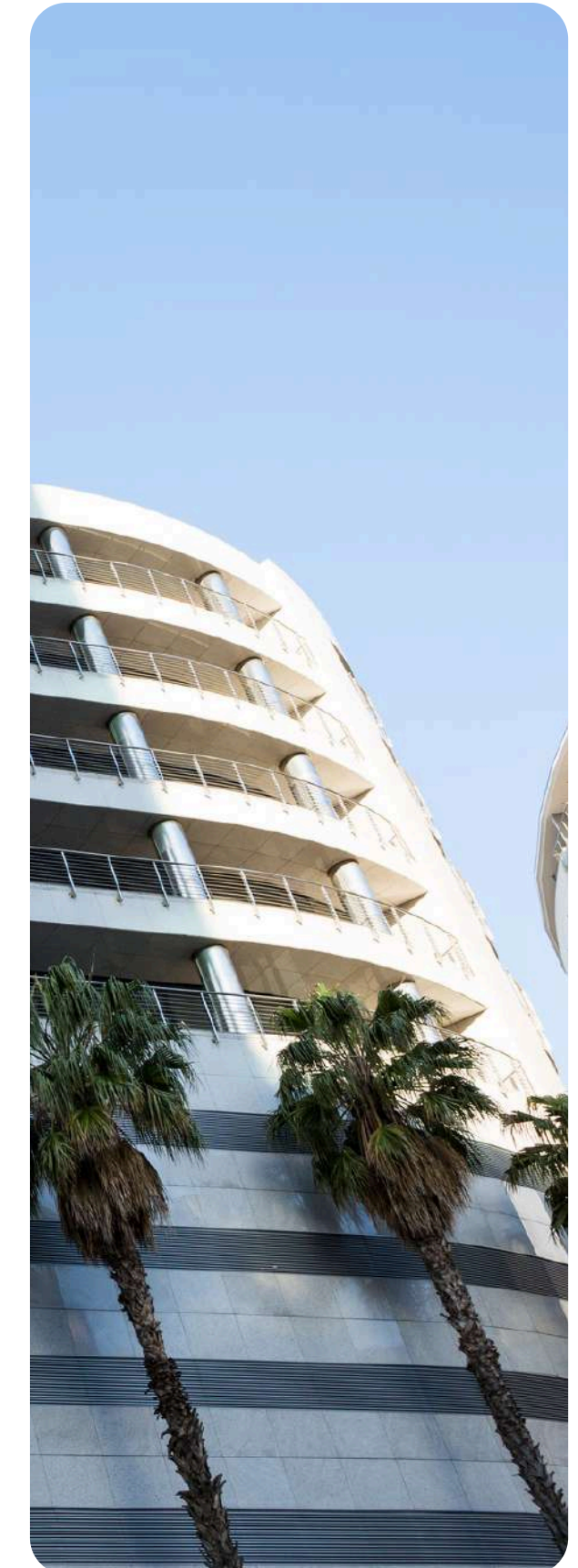
LEED

➤ **What is it?**

The LEED (Leadership in Energy and Environmental Design) certification is a benchmark for sustainable construction and high environmental quality buildings. Developed by the US Green Building Council, this North American certification aims to measure and reduce the environmental impact of buildings throughout their lifecycle. It applies to a variety of real estate projects such as new constructions, existing buildings, interior renovations, and even neighborhoods.

➤ **Why obtain LEED certification?**

LEED certification is globally recognized as a mark of excellence in environmental and energy performance. It improves the commercial value of your real estate projects and is a valuable asset to attract future investors. By certifying your building LEED, you not only optimize your energy efficiency but also your operating costs. This certification also reflects your CSR commitments and improves the quality of life for occupants.



LEED

➤ **LEED Certification Criteria**

LEED certification is based on six main categories :

- Site Development
- Water Management
- Energy Performance
- Materials and Resource Management
- Indoor Environmental Quality
- Innovation

Buildings must meet mandatory prerequisites and achieve a minimum number of points to reach one of the four certification levels: Certified, Silver, Gold, and Platinum.

➤ **Qovans' Commitment**

We understand the importance of LEED certification for your projects. Although our products and systems cannot be certified individually, they positively contribute to projects aiming for LEED certification. We provide innovative and eco-friendly solutions that help meet the certification criteria.



OUR AMBITION : DESIGNING RESPONSIBLE PARTITIONS

To contribute to eco-construction projects, we have developed partnerships and high-performance technical solutions around a major directive : to manufacture and market responsible partitions.

➤ **Frames**

The profiles used in our partition systems are made of lacquered aluminum. The surface treatment performed only in the factory limits site waste and eliminates nuisances related to stripping and painting. Aluminum is a durable and infinitely recyclable material without losing its qualities or value.

➤ The emission of VOCs from our lacquered aluminum frames is classified A+.




- Our joint-cover partition systems allow for the demountability of glazed elements or infill panels. They are removable by reusing independent elements in case of maintenance work.
- Our solid edge-to-edge partition systems offer demountability and removability of infill panels through the Performa mounting system, ensuring panel interchangeability.
- Our glazed edge-to-edge partition systems offer demountability and removability of glazing through the FIFTY assembly system, an aluminum glazing junction profile.



OUR AMBITION : DESIGNING RESPONSIBLE PARTITIONS

➤ Fillings



The facings we use in the assembly of our partitions offer the following characteristics :

Support	C.O.V classification	Fire reaction
Plaster		B-s1, d0
Melamine		D-s2, d0
Glass		A1, d0

➤ Insulation

On certain sites, we are able to offer recycled cotton fibre wool as a replacement for standard mineral wool. This insulation is recyclable during the dismantling phase.

The coatings used offer the following characteristics :

Support	C.O.V classification	Fire reaction
PVC		B-s1, d0
Pre-painted sheet metal		A-s1, D0



• • • • • OUR CERTIFICATIONS



Qovans® is actively involved in the High Environmental Quality (HEQ) approach, producing Environmental and Health Declaration Sheets (EHSDS) for its products. Essential for environmental management, these sheets are integrated into the initiatives of project owners and the "green purchasing" policy.

The company has these collective ESDSs via the S.N.F.A for its CLIPS®, P85® and EVO100 brand partitions, covering all their finishes. We also have individual EHSFs for our Fontex® brand furnishing panels.

In compliance with standards NF EN 15804+A1 and NF EN 15804/CN, our EHSFs detail the Life Cycle Assessment (LCA) of our products, covering all stages of their life cycle. They provide quantitative and qualitative data on environmental and health impacts, and are validated by an independent third party, guaranteeing their reliability.

EHSFs make it possible to integrate environmental and health criteria into purchasing decisions, helping to select products that make construction more sustainable and environmentally friendly. Our products meet regulatory requirements, supporting responsible construction practices.

Qovans® EHSFs illustrate our commitment to HQE construction and 'green purchasing', providing an effective response for optimised environmental management and contributing to a more sustainable future.



... OUR CERTIFICATIONS



We are proud to announce that our removable partitions have received CERFF certification, attesting to their rigorous compliance with NF DTU 35.1 standards. This certification ensures the quality, safety, and durability of our products, meeting the highest standards.

Each partition model undergoes extensive testing by the CERFF Association, including :

- Ease of dismantling
- Shock stability
- Horizontal thrust resistance
- Support for vertical and point loads
- Door block endurance
- Acoustic attenuation

This certification reflects our commitment to High Environmental Quality (HQE), ensuring safe, durable, and acoustically comfortable spaces. Our CERFF-certified partitions are the ideal choice for projects requiring flexibility and performance.



Rue de l'Industrie
14700 FALAISE
+33 (0)2 31 40 44 04
contact@qovans.com
www.qovans.com

A step towards a more sustainable future

